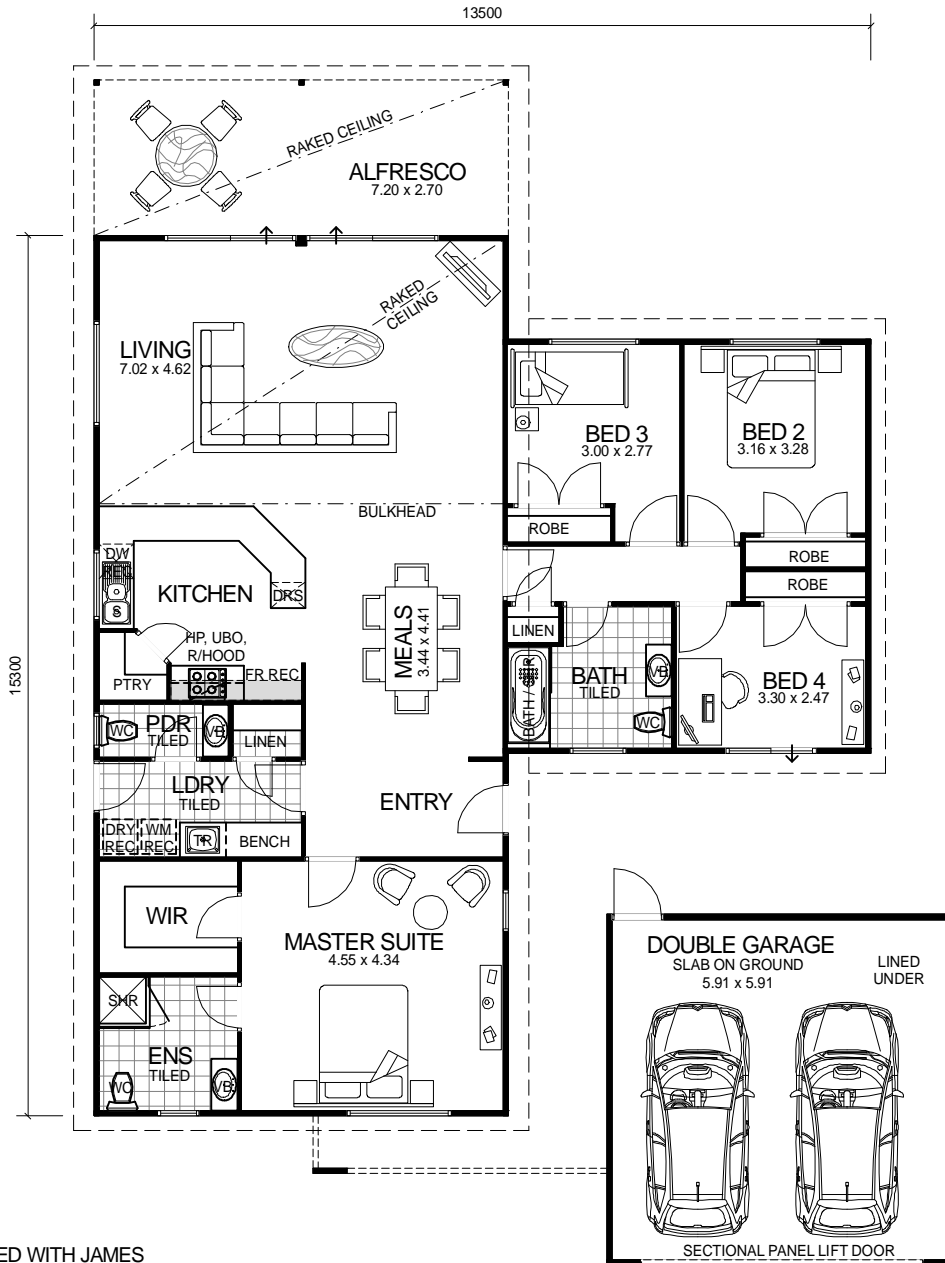
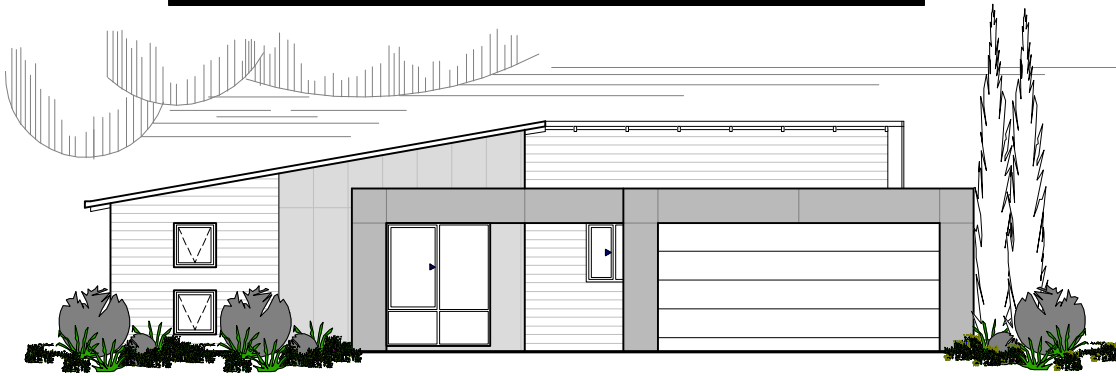


CITY SERIES



DESIGN FEATURES

- ARCHITECTURALLY DESIGNED WITH JAMES HARDIE SCYON CLADDING TO FRONT ELEVATION AND MODERN ROOF.
- SMART GLASS TO ALL ALUMINIUM WINDOWS AND DOORS IN CLIMATE ZONES 4 & 5.
- 2.4m CEILING HEIGHT.
- LARGE DOUBLE GARAGE JOINED TO MAIN HOME WITH LINED CEILING AND MODERN LOOK DOUBLE SECTIONAL DOOR.
- LARGE FEATURE ALFRESCO WITH RAKED CEILING.
- LARGE KITCHEN WITH WALK IN PANTRY AND STAINLESS STEEL APPLIANCES.
- DISHWASHER RECESS INCLUDED TO KITCHEN.
- HIGHER RAKED CEILING TO LIVING AREA.
- SEPARATE POWDER ROOM.

4 BEDROOM x 2.5 BATHROOM

"THE STYLUS"

TOTAL HOMES © COPYRIGHT

OVERALL SIZE:
Width 15.00m
Length 20.59m

AREA

HOUSE:	155.52m ²
GARAGE:	37.09m ²
ALFRESCO:	19.44m ²
TOTAL:	212.05m²