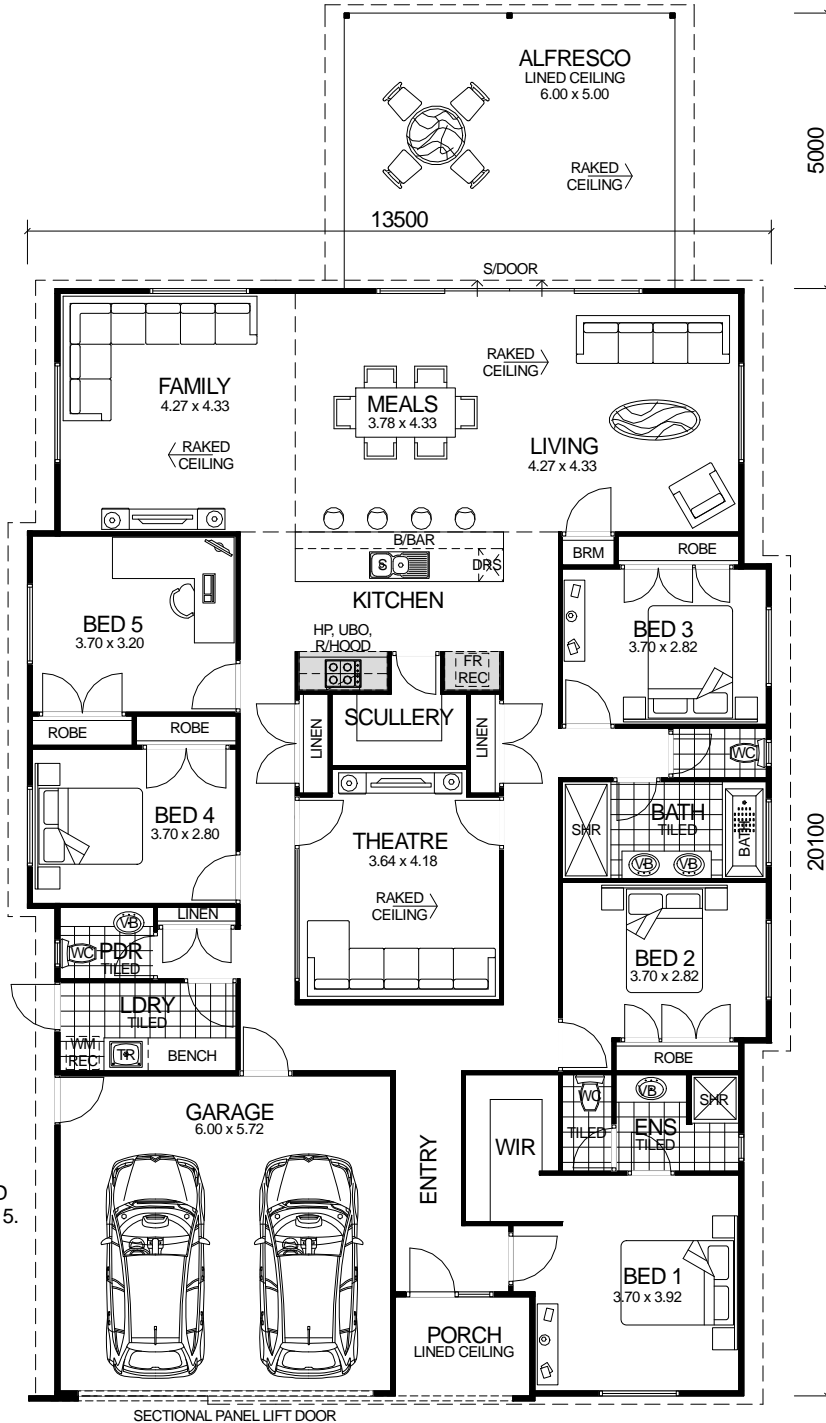


# METRO SERIES



## DESIGN FEATURES

- ARCHITECTURALLY DESIGNED MODERN IN VOGUE FRONT ELEVATION.
- SMART GLASS INCLUDED TO ALL ALUMINIUM WINDOWS AND DOORS IN CLIMATE ZONES 4 & 5.
- LARGE GALLEY KITCHEN WITH BREAKFAST BAR, WALK-IN PANTRY AND STAINLESS STEEL APPLIANCES.
- LARGE SHOWER RECESS TO BATHROOM.
- GLASS HIGHLIGHT WINDOWS TO THEATRE.
- LARGE ALFRESCO INCLUDED WITH RAKED CEILINGS.
- LARGE SLIDING DOOR SET TO LIVING / ALFRESCO.
- SEPARATE POWDER ROOM.
- HIGH RAKING CEILING TO LIVING, MEALS & FAMILY.
- FEATURE TIMBER FRONT DOOR WITH MATCHING SIDELIGHT.
- 2.4m CEILING HEIGHT.

**OVERALL SIZE:**  
Width 13.50m  
Length 25.19m

## AREA

HOUSE:	218.17m <sup>2</sup>
GARAGE:	36.46m <sup>2</sup>
PORCH:	4.39m <sup>2</sup>
ALFRESCO:	30.00m <sup>2</sup>
<b>TOTAL:</b>	<b>289.02m<sup>2</sup></b>

**5 BEDROOM x 2.5 BATHROOM  
PLUS THEATRE**

**"THE COASTAL 5x2.5"**

TOTAL HOMES © COPYRIGHT