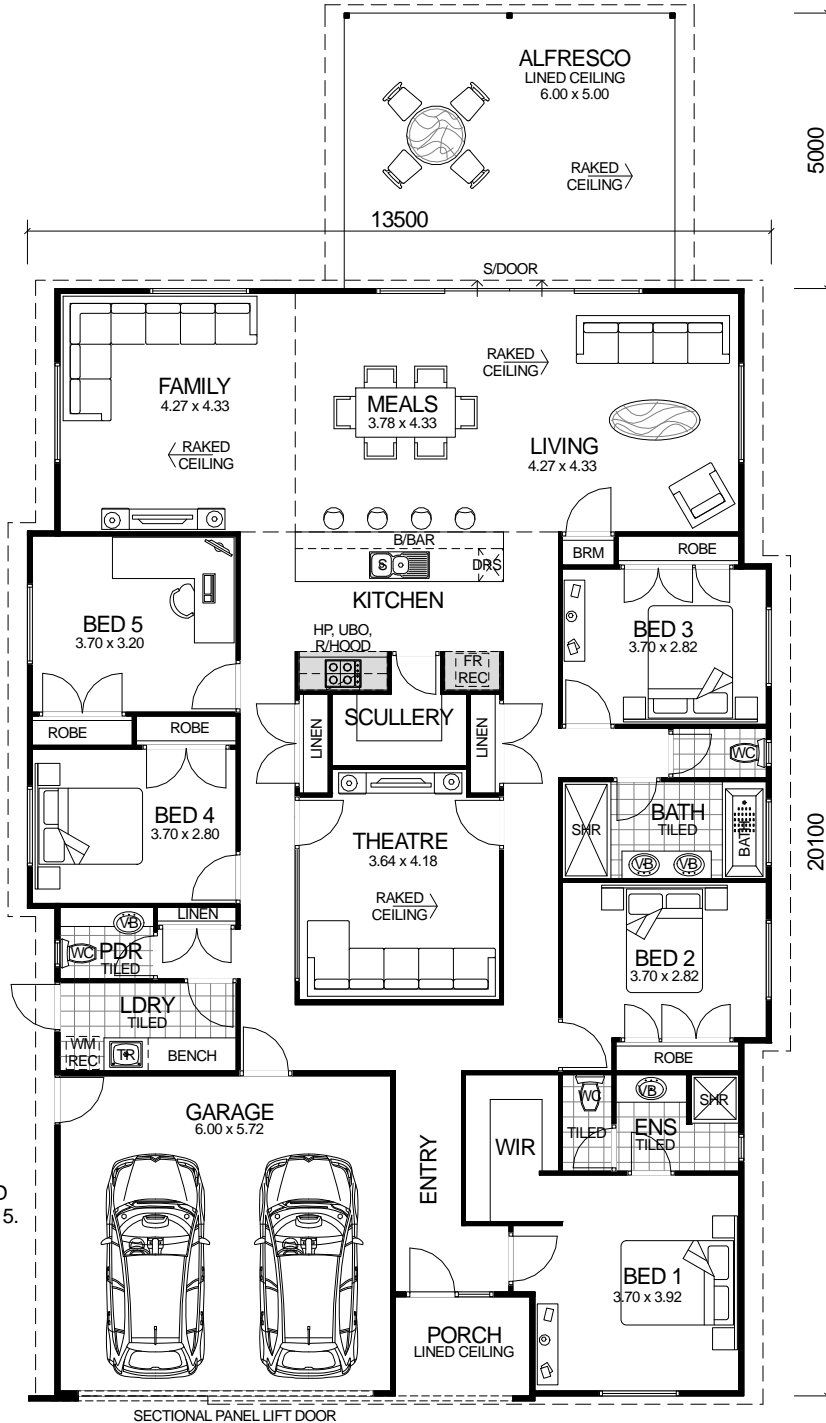


METRO SERIES



DESIGN FEATURES

- ARCHITECTURALLY DESIGNED MODERN IN VOGUE FRONT ELEVATION.
- SMART GLASS INCLUDED TO ALL ALUMINIUM WINDOWS AND DOORS IN CLIMATE ZONES 4 & 5.
- LARGE GALLEY KITCHEN WITH BREAKFAST BAR, WALK-IN PANTRY AND STAINLESS STEEL APPLIANCES.
- LARGE SHOWER RECESS TO BATHROOM.
- GLASS HIGHLIGHT WINDOWS TO THEATRE.
- LARGE ALFRESCO INCLUDED WITH RAKED CEILINGS.
- LARGE SLIDING DOOR SET TO LIVING / ALFRESCO.
- SEPARATE POWDER ROOM.
- HIGH RAKING CEILING TO LIVING, MEALS & FAMILY.
- FEATURE TIMBER FRONT DOOR WITH MATCHING SIDELIGHT.
- 2.4m CEILING HEIGHT.

OVERALL SIZE:
Width 13.50m
Length 25.19m

**5 BEDROOM x 2.5 BATHROOM
PLUS THEATRE**

"THE COASTAL 5x2.5"

TOTAL HOMES © COPYRIGHT

AREA

HOUSE:	218.17m ²
GARAGE:	36.46m ²
PORCH:	4.39m ²
ALFRESCO:	30.00m ²
TOTAL:	289.02m²