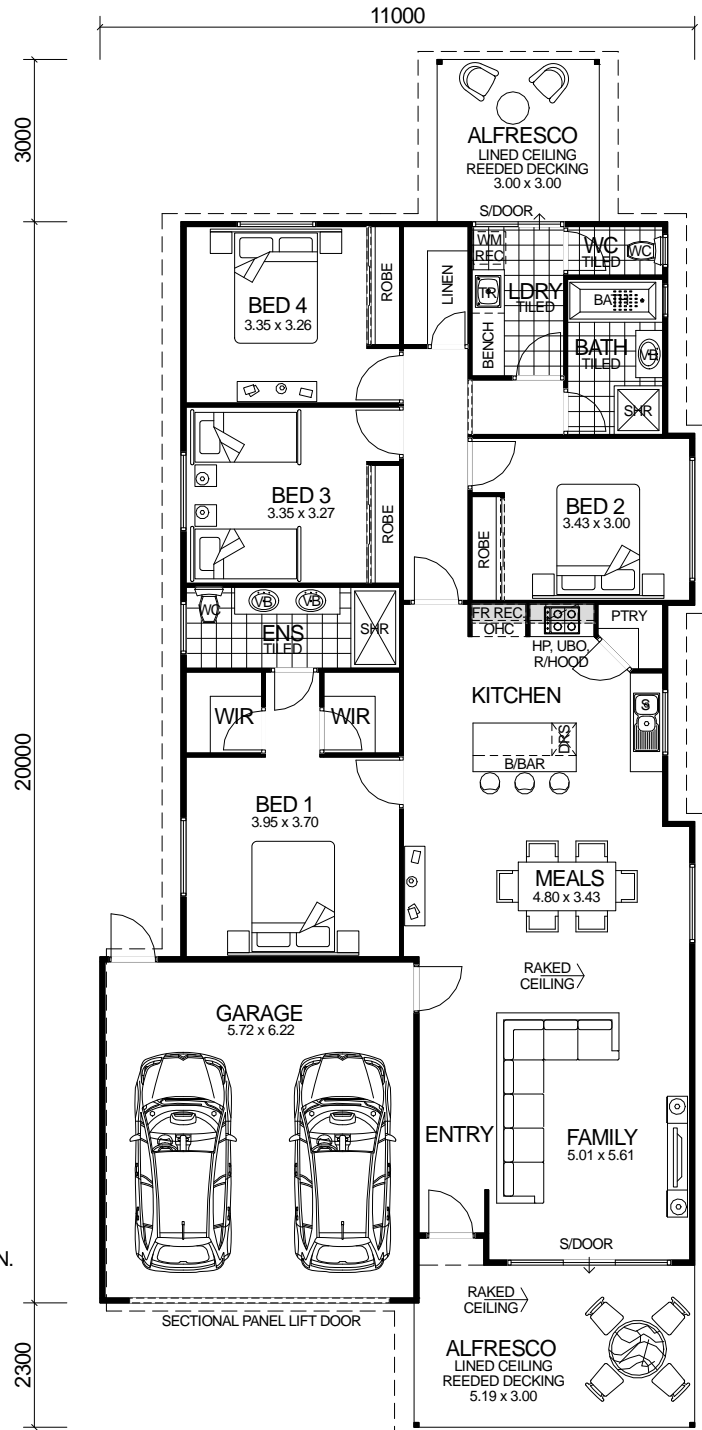
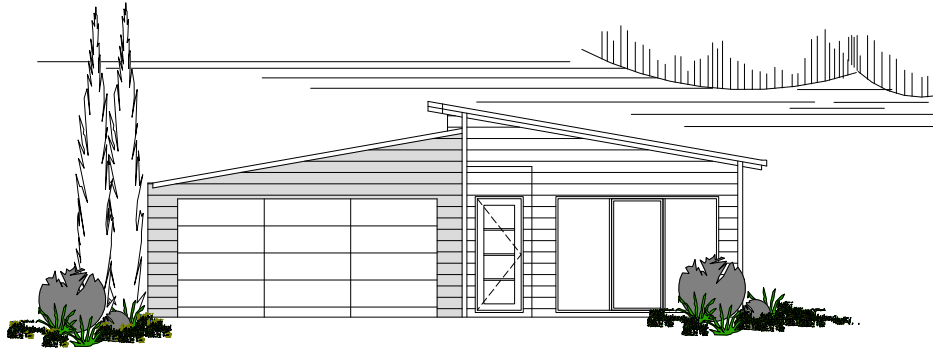


METRO SERIES



DESIGN FEATURES

- ARCHITECTURALLY DESIGNED MODERN IN VOGUE FRONT ELEVATION.
- SMART GLASS INCLUDED TO ALL ALUMINIUM WINDOWS AND DOORS IN CLIMATE ZONES 4 & 5.
- LARGE GALLEY KITCHEN WITH BREAKFAST BAR AND STAINLESS STEEL APPLIANCES.
- LARGE WALK-IN LINEN.
- LARGE SHOWER RECESS WITH HIS & HERS VANITY BASINS TO ENSUITE.
- LARGE ALFRESCO INCLUDED.
- LARGE SLIDING DOOR SET TO FAMILY / ALFRESCO.
- HIGH RAKING CEILING TO FAMILY, MEALS & KITCHEN.
- 2.7m CEILING HEIGHT.

**NARROW BLOCK
COMPATIBLE**

OVERALL SIZE:
Width 11.00m
Length 25.30m

AREA

| | |
|-------------------|----------------------------|
| HOUSE: | 154.57m ² |
| GARAGE: | 36.90m ² |
| ALFRESCO (FRONT): | 16.11m ² |
| ALFRESCO (REAR): | 9.00m ² |
| TOTAL: | 216.58m² |

4 BEDROOM x 2 BATHROOM

"THE OCEAN 4x2"

TOTAL HOMES © COPYRIGHT