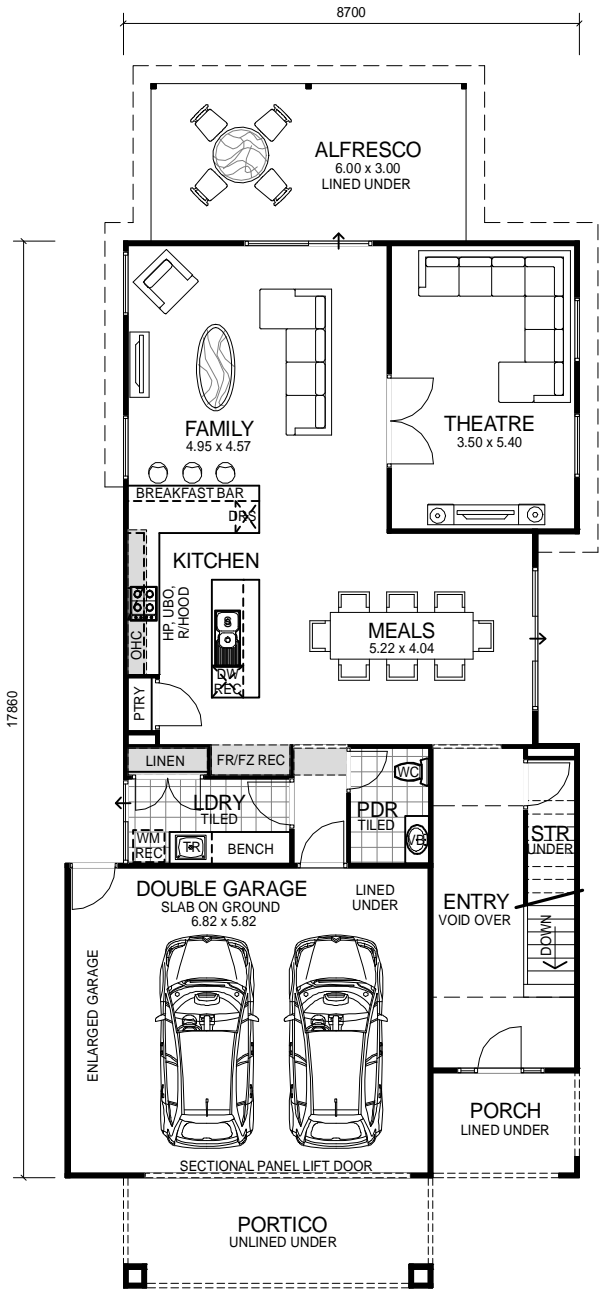
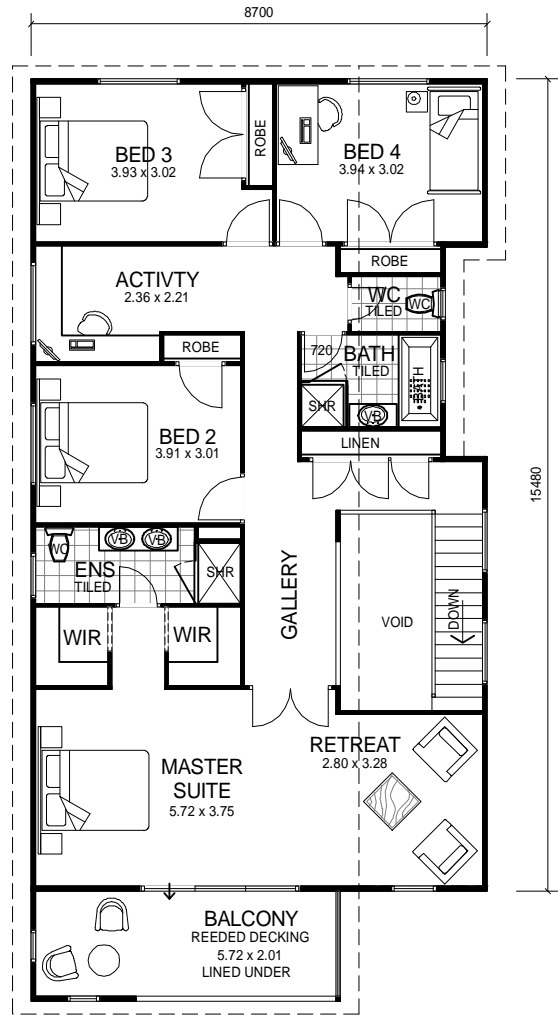


# CITY SERIES



GROUND FLOOR



UPPER FLOOR

**DESIGN FEATURES**

- ARCHITECTURALLY DESIGNED WITH JAMES HARDIE SCYON CLADDING TO FRONT ELEVATION AND MODERN ROOF.
- SMART GLASS TO ALL ALUMINIUM WINDOWS AND DOORS IN CLIMATE ZONES 4 & 5.
- 2.4m CEILING HEIGHT.
- LARGE DOUBLE GARAGE JOINED TO MAIN HOME WITH LINED CEILING AND MODERN LOOK DOUBLE SECTIONAL DOOR.
- LARGE FEATURE ALFRESCO OFF FAMILY ROOM TO REAR OF HOME WITH LINED CEILING.
- LARGE KITCHEN WITH STAINLESS STEEL APPLIANCES.
- DISHWASHER RECESS AND BREAKFAST BAR INCLUDED TO KITCHEN.
- HIS & HERS WALK IN ROBES.
- HIS & HERS VANITY BASINS TO ENSUITE.
- SEPARATE POWDER ROOM
- THEATRE ROOM.
- POWERCOATED ALUMINIUM BALUSTRADE WITH GLASS INFILL PANELS TO UPPER FLOOR.

4 BEDROOM x 2.5 BATHROOM

## "THE METROPOLITAN"

TOTAL HOMES © COPYRIGHT

**NARROW BLOCK COMPATIBLE**

**OVERALL SIZE:**  
Width 9.80m  
Length 22.96m

AREA	
GROUND FLOOR:	111.18m <sup>2</sup>
UPPER FLOOR:	131.48m <sup>2</sup>
ALFRESCO:	18.00m <sup>2</sup>
GARAGE:	42.00m <sup>2</sup>
PORCH:	5.60m <sup>2</sup>
PORTICO:	12.39m <sup>2</sup>
BALCONY:	12.39m <sup>2</sup>
<b>TOTAL:</b>	<b>333.04m<sup>2</sup></b>