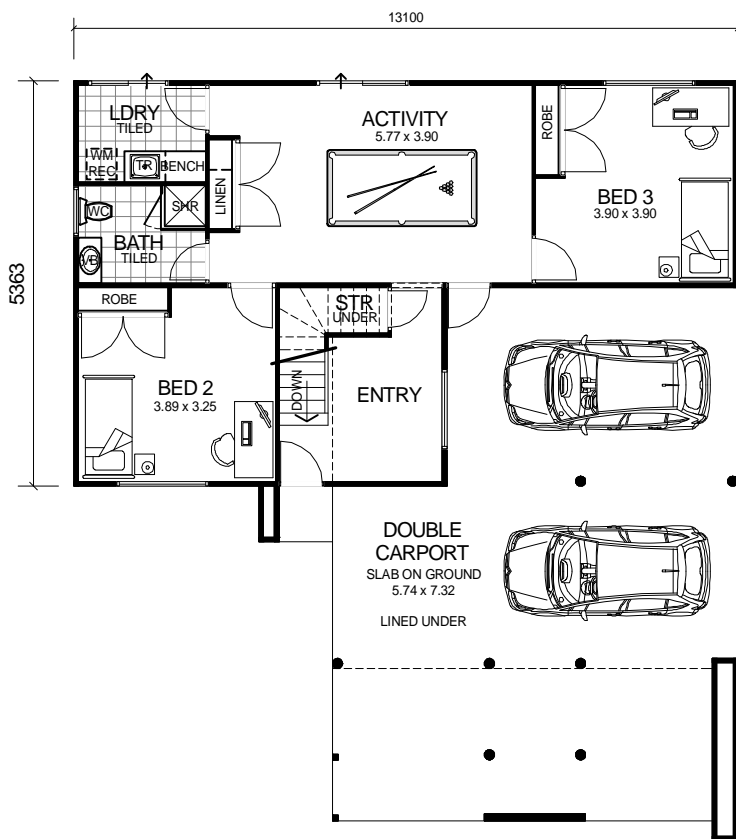
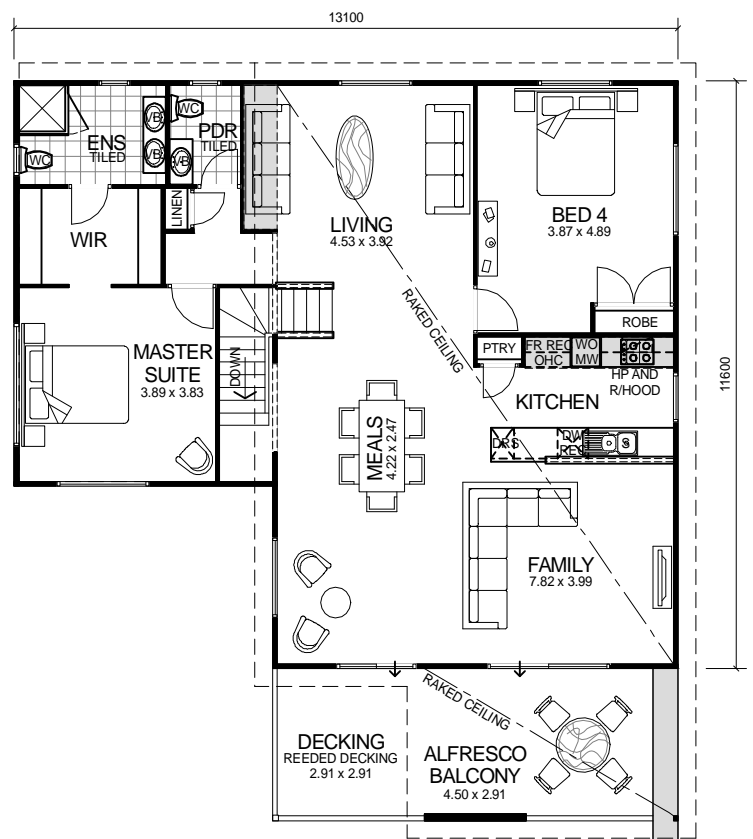


# CITY SERIES



**GROUND FLOOR**



**UPPER FLOOR**

**DESIGN FEATURES**

- ARCHITECTURALLY DESIGNED WITH JAMES HARDIE SCYON CLADDING TO FRONT ELEVATION AND MODERN ROOF.
- SMART GLASS TO ALL ALUMINIUM WINDOWS AND DOORS IN CLIMATE ZONES 4 & 5.
- 2.4m CEILING HEIGHT.
- LARGE DOUBLE CARPORT JOINED TO MAIN HOME WITH LINED CEILING.
- LARGE FEATURE ALFRESCO BALCONY WITH RAKED CEILING.
- LARGE KITCHEN WITH STAINLESS STEEL APPLIANCES.
- DISHWASHER RECESS INCLUDED TO KITCHEN.
- HIS & HERS WALK IN ROBES.
- HIS & HERS VANITY BASINS TO ENSUITE.
- HIGHER RAKED CEILING TO FAMILY, MEALS, LIVING, AND KITCHEN.
- SEPARATE POWDER ROOM.
- LARGE ACTIVITY ROOM.
- POWERCOATED ALUMINIUM BALUSTRADE WITH GLASS INFILL PANELS TO UPPER FLOOR.

4 BEDROOM x 2.5 BATHROOM

## "THE STATUS"

TOTAL HOMES © COPYRIGHT

<b>OVERALL SIZE:</b>
Width 13.10m
Length 15.00m

<b>AREA</b>	
GROUND FLOOR:	82.30m <sup>2</sup>
UPPER FLOOR:	133.60m <sup>2</sup>
BALCONY:	15.00m <sup>2</sup>
DECKING:	9.00m <sup>2</sup>
<b>TOTAL:</b>	<b>239.90m<sup>2</sup></b>