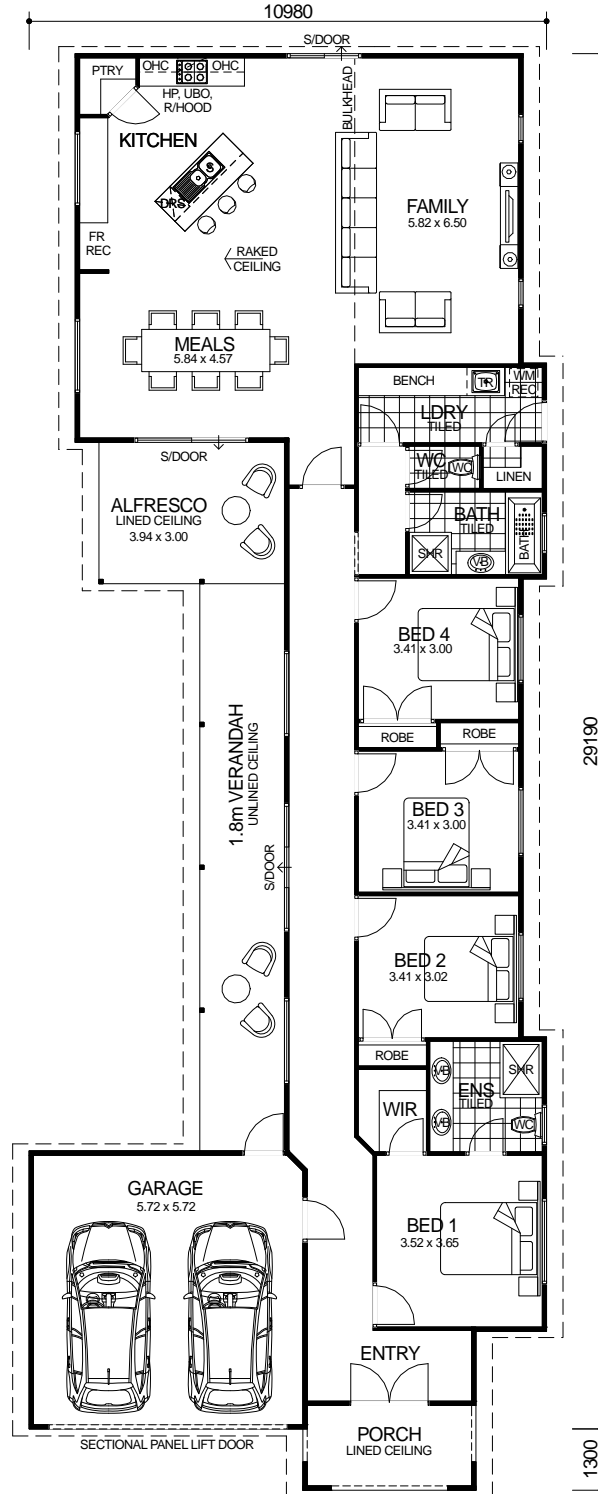
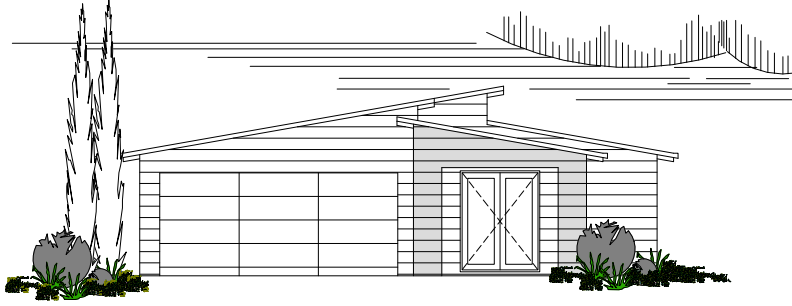


# METRO SERIES



## DESIGN FEATURES

- ARCHITECTURALLY DESIGNED MODERN IN VOGUE FRONT ELEVATION.
- SMART GLASS INCLUDED TO ALL ALUMINIUM WINDOWS AND DOORS IN CLIMATE ZONES 4 & 5.
- LARGE GALLEY KITCHEN WITH BREAKFAST BAR, WALK-IN PANTRY AND STAINLESS STEEL APPLIANCES.
- LARGE WALK-IN LINEN.
- LARGE SHOWER RECESS WITH HIS & HERS VANITY BASINS TO ENSUITE.
- LARGE ALFRESCO DECK & VERANDAH INCLUDED.
- HIGH RAKING CEILING TO KITCHEN & MEALS.
- FEATURE DOUBLE TIMBER FRONT DOORS
- 2.4m CEILING HEIGHT.

4 BEDROOM x 2 BATHROOM  
PLUS THEATRE

## "THE SAPPHIRE 4x2"

TOTAL HOMES © COPYRIGHT

NARROW BLOCK  
COMPATIBLE

OVERALL SIZE:  
Width 10.98m  
Length 30.49m

AREA	
HOUSE:	183.05m <sup>2</sup>
GARAGE:	34.81m <sup>2</sup>
ALFRESCO:	11.82m <sup>2</sup>
VERANDAH:	21.67m <sup>2</sup>
PORCH:	6.57m <sup>2</sup>
<b>TOTAL:</b>	<b>257.92m<sup>2</sup></b>